

# Boliger i Lem

Skitseforslag  
30.06.2020  
Sag 19065

# SITUATIONSPLAN 1:750



<b>Etape 1, 10 boliger</b>	
Type A, 6 boliger á 101 m <sup>2</sup>	606 m <sup>2</sup>
Type B, 4 boliger á 110 m <sup>2</sup>	440 m <sup>2</sup>
<b>I alt, etape 1</b>	<b>1046 m<sup>2</sup></b>
<b>Etape 2, 10 boliger</b>	
Type A, 7 boliger á 101 m <sup>2</sup>	707 m <sup>2</sup>
Type B, 3 boliger á 110 m <sup>2</sup>	330 m <sup>2</sup>
<b>I alt, etape 2</b>	<b>1037 m<sup>2</sup></b>
<b>I alt</b>	<b>2.083 m<sup>2</sup></b>
<b>Grundareal:</b>	<b>ca. 15.990 m<sup>2</sup></b>
<b>Bebyggelsesprocent:</b>	<b>13,0 %</b>

# UDSTYKNINGSPLAN 1:750



## AREALER

Vej og sti areal **3530 m<sup>2</sup>**

Fælles opholdsareal **3430 m<sup>2</sup>**

Andel pr. bolig  $3430/20 = 171 \text{ m}^2$

**Boligtype A** **101 m<sup>2</sup>**

Grundareal inkl. fællesareal  $264 + 171 = 435 \text{ m}^2$

Bebyggelsesprocent **23,2 %**

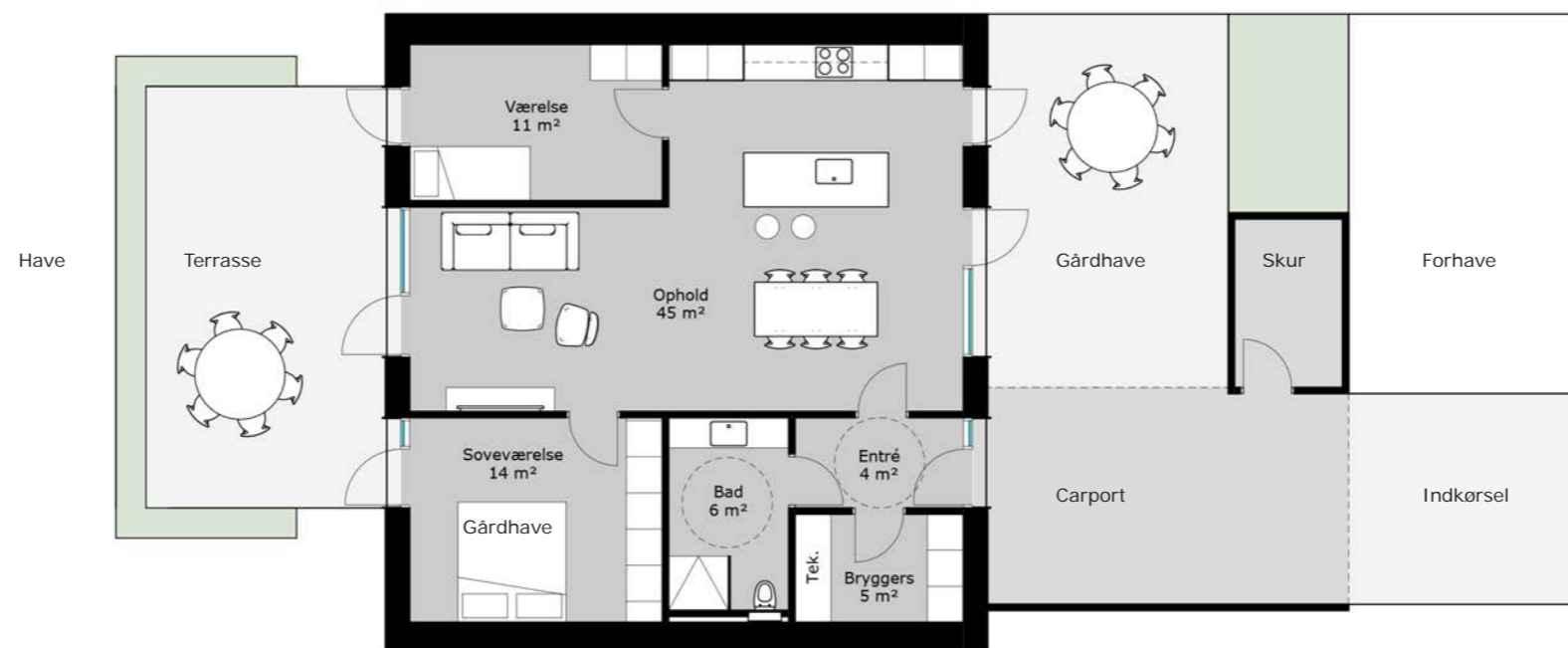
**Boligtype B** **110 m<sup>2</sup>**

Grundareal inkl. fællesareal  $291 + 171 = 462 \text{ m}^2$

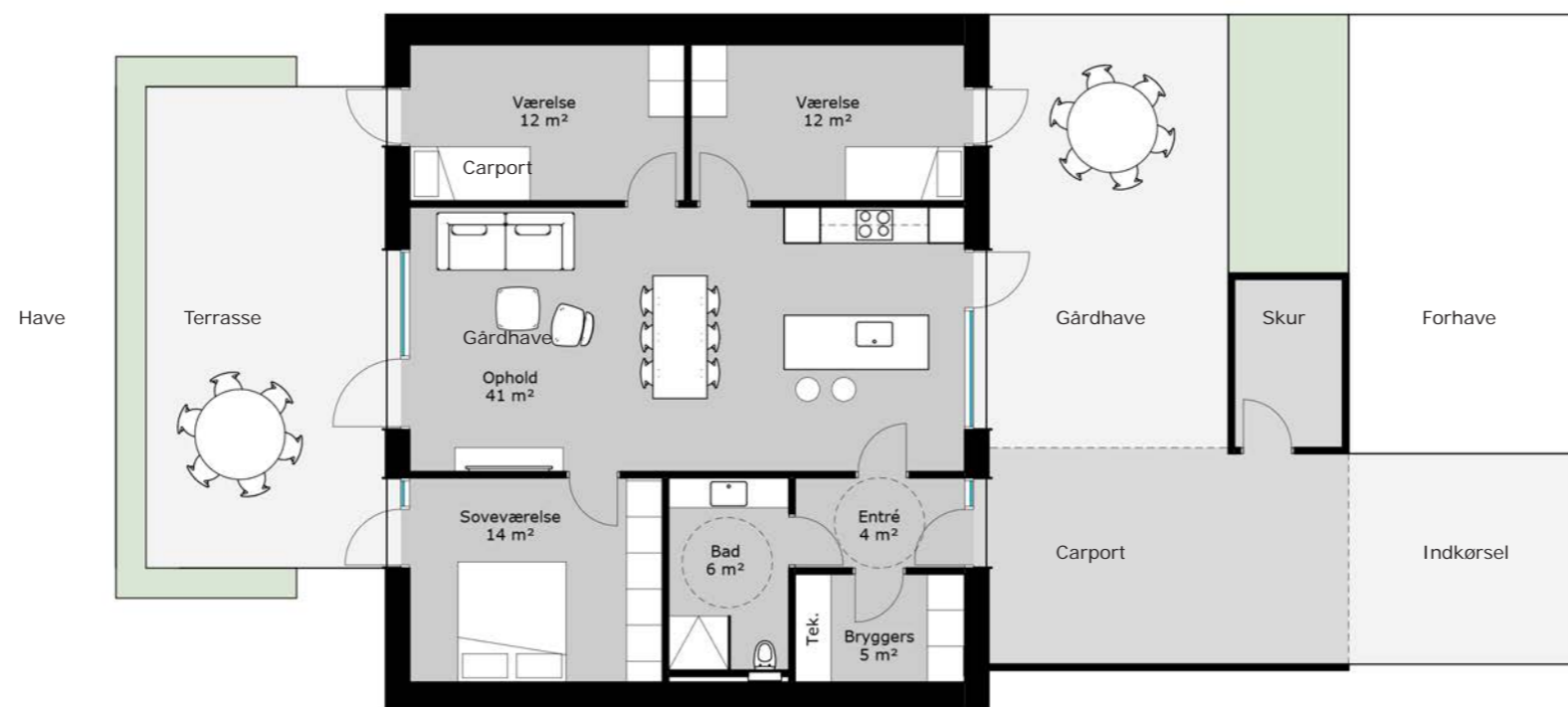
Bebyggelsesprocent **23,8 %**

# BOLIGPLANER 1:125

**Type A**  
**4 rum**  
101 m<sup>2</sup>

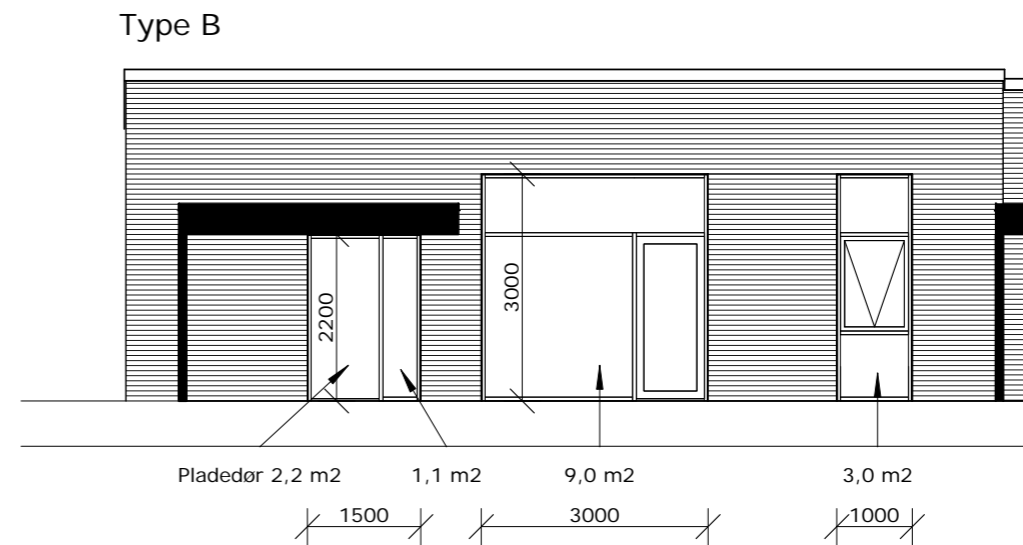
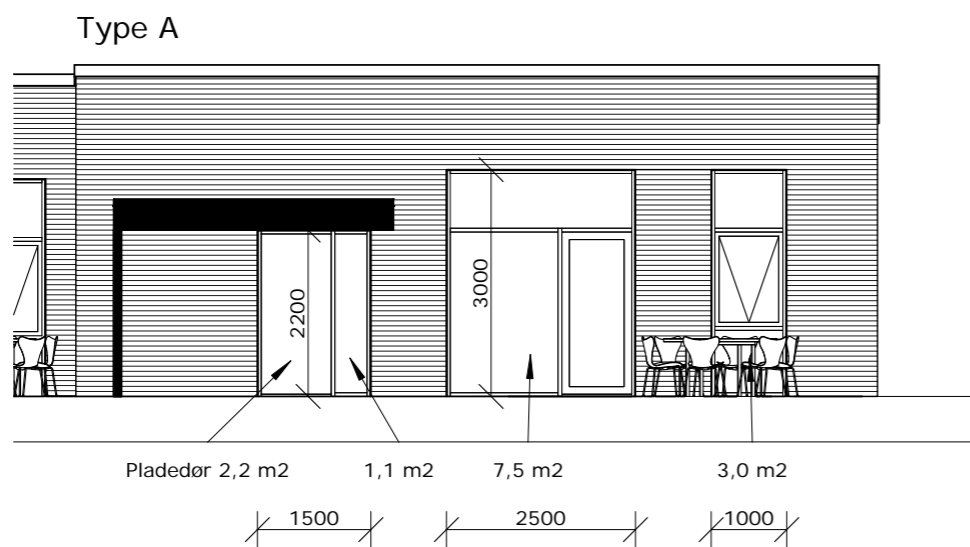


**Type B**  
**3 rum**  
110 m<sup>2</sup>

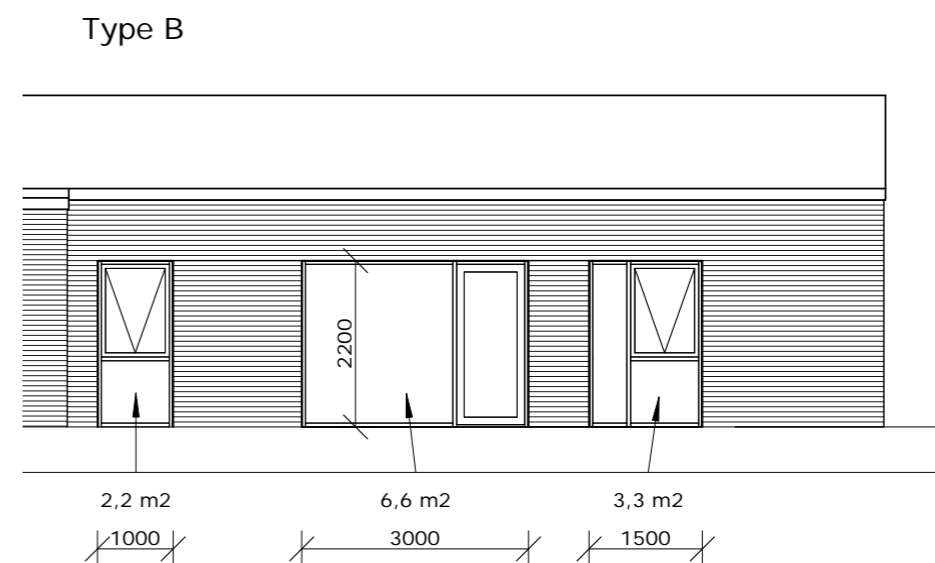
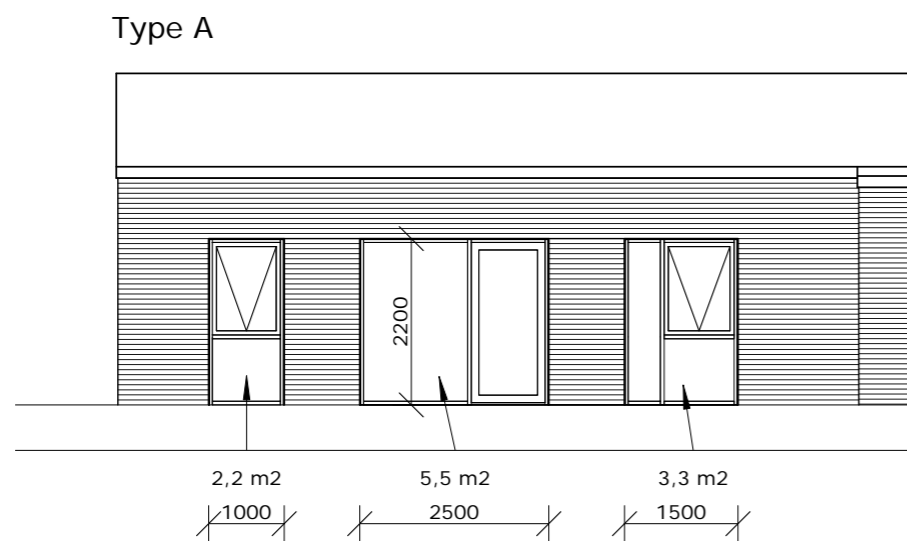


# FACADER 1:100

## Øst- og nordøstfacader



## Vest- og sydvestfacader



# PERSPEKTIV



# PERSPEKTIV



# PERSPEKTIV

